

**ISaGRAF**  
A Rockwell Automation Company



spotlight

ISaGRAF training

## ISaGRAF 5 graphical IEC 61131-3 programming on SIXNET IPm2m® RTU and Datalogger

ISaGRAF is the software of choice for SIXNET's IPm2m® RTU and Datalogger.

The IPm2m is an innovative combination of a remote terminal unit, a datalogger, a telemetry interface, and a real-time database client. It features flexible software options, including IEC 61131-3 graphical programming thanks to the embedded feature-rich ISaGRAF Open, which is based on ISaGRAF 5.

SIXNET and ISaGRAF have a longstanding relationship going back to 1995. SIXNET was the first Automation vendor to offer ISaGRAF as a standard feature. In 2008, SIXNET introduced a seamless migration path for the tens of thousands of installed ISaGRAF applications (from v.3 to v.5) so that new and existing users could take advantage of the latest application development technology while maintaining their existing applications.



[Read full story](#)

Let our experts show you how to use ISaGRAF and give you some tricks & technical tips, or let them guide you through the features offered in ISaGRAF version 5 and provide you with an in-depth understanding of IEC 61499.

Group training sessions offered in Montreal (Canada) or Houston (USA) on:

August 18-20, 2009  
Sept. 22-24, 2009

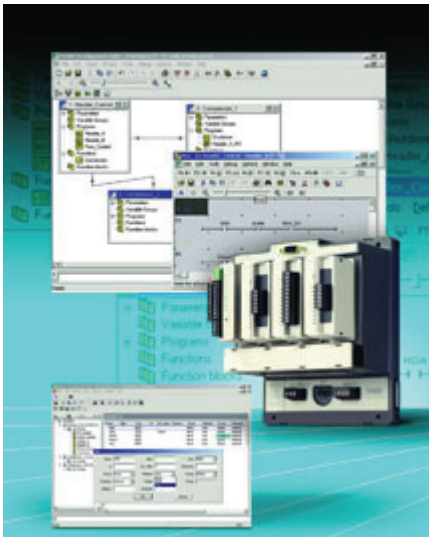
Group training sessions offered in Meylan (France) on:

Aug. 31 - Sept.4, 2009  
Sept. 21-25, 2009

Alternatively, you may schedule a training session at your offices.

[Register now](#)

## Emerson uses ISaGRAF to provide IEC graphical programming capability for its FloBoss™ Flow Manager family



Emerson recently announced that its powerful DS800 Development Suite is now available for its FloBoss Flow Manager family of natural gas and liquid flow computer.

Powered by ISaGRAF, the DS800 Development Suite provides all five IEC 61131-3 programming languages, as well as Flow Chart.

DS800 Development Suite provides a standard programming interface that allows individuals with different backgrounds and skills to create unique elements of a program using any of these five programming languages. When completed, all elements will work together seamlessly.

The DS800 Development Suite also includes a built-in simulator to allow test and debug of the program before it is downloaded to the flow computer.

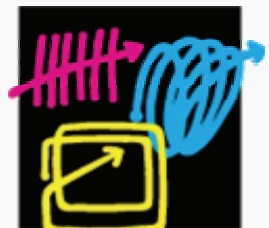
Courtesy of Emerson Process Management

The first member of the FloBoss family to provide this versatile graphical programming tool is the FloBoss 107. The DS800 Development Suite is also available on the ROC800-Series Remote Operations Controller (ROC800).

[Click here for more information](#)

## upcoming events

**November 24-26, 2009:**  
**Come see us at**  
**SPS/IPC/DRIVES Stand 7A-508**



**SPS/IPC/DRIVES/**  
**Electric**  
**Automation**  
Systems and Components  
Exhibition & Conference  
**24 - 26 Nov. 2009**  
**Nuremberg**

ICS Triplex ISaGRAF will be exhibiting at this year's SPS/IPC/DRIVES.

[Click here if you would like to receive a free visitor's pass for SPS 2009.](#)

## ISaGRAF 5 Open Programming on Kingfisher SCADA system RTUs with Secure DNP3 Authentication

ISaGRAF is the software of choice for CSE-Semaphore's Kingfisher series of Advanced RTUs, which are now available with Secure DNP3 Authentication.

Secure DNP3 authentication provides protection between master stations (i.e. control servers, HMIs) and remote stations (i.e. RTUs, PLCs) by verifying that both the master station and remote station are who they claim to be, to prevent attacks such as hijacking, spoofing, etc. Authentication ensures that messages arriving at the remote station come from the master station or another legitimate element in the SCADA system. The Keyed Hash Message Authentication Code (HMAC) protocol used in the authentication process validates data integrity by using 3 components, including a shared key that only the sender and intended recipient have, so that only they calculate or authenticate the HMAC.

Secure DNP3 protocol authentication is one of several features in Semaphore's security initiative for its Kingfisher product line, which includes the Kingfisher PLUS+™ and G30 models. The Kingfisher PLUS+ and G30 Series both fully embed the ISaGRAF 5 control software environment, making them the first RTUs to support both the IEC 61131-3 and IEC 61499 standards.

[Read full story](#)



## OSI selects ISaGRAF 5 for their OSIRIS™ Remote Telemetry Unit

Open Systems International, Inc. (OSI) has selected ISaGRAF v5 for the new Automation Control Platform (ACP) option on their innovative and versatile OSIRIS™ Secure RTU.



OSIRIS (OSI Remote Information System) is a remote information and metering unit with built-in security features for secure communications for critical utility operations over serial or IP-based connections. This makes it ideal for the communications, oil & gas, electric power, and water industries.

Powered by ISaGRAF v5, the new ACP option provides OSIRIS users with full IEC61131-compliant programmable logic functionality and an intuitive application development environment.

[Read full story](#)

© Copyright 2009 ICS Triplex ISaGRAF Inc. All rights reserved.

[unsubscribe](#)

**ISaGRAF**  
A Rockwell Automation Company

### contact us

#### Head Office

ICS Triplex ISaGRAF Inc.  
9975 Catania Avenue, Suite U  
Brossard, Quebec  
J4Z 3V6 Canada  
Toll Free: 1 877 868 4746  
Tel: +1 450 445-3353  
Fax: +1 450 445-3426



[sales@isagraf.com](mailto:sales@isagraf.com)

#### Europe Sales & Support

ICS Triplex ISaGRAF Inc.  
6bis Chemin des Prés  
38240 Meylan  
France  
Tel: +33 (0) 476 048175  
Fax: +33 (0) 4 76 41 35 61



[sales@isagraf.com](mailto:sales@isagraf.com)



[www.isagraf.com](http://www.isagraf.com)



ICS Triplex ISaGRAF is a proud member of O3NEIDA

<http://www.ooneida.org>